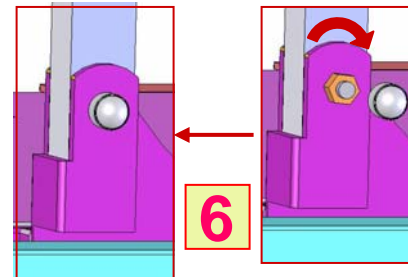
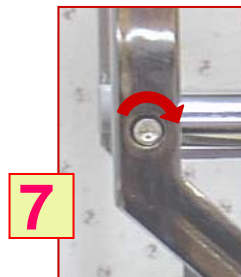
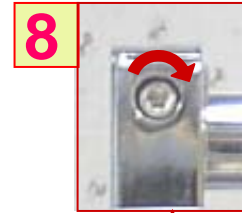
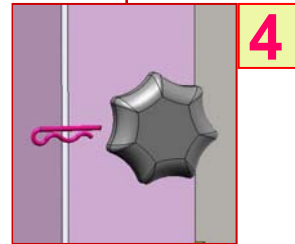
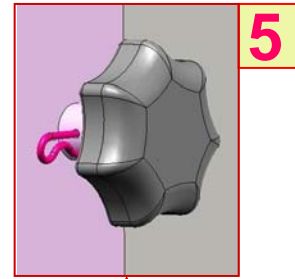
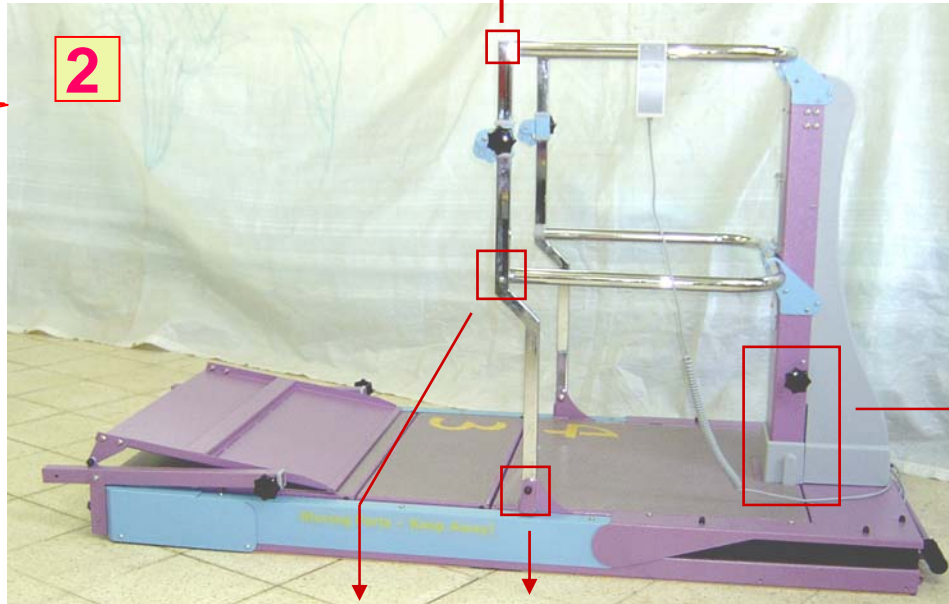
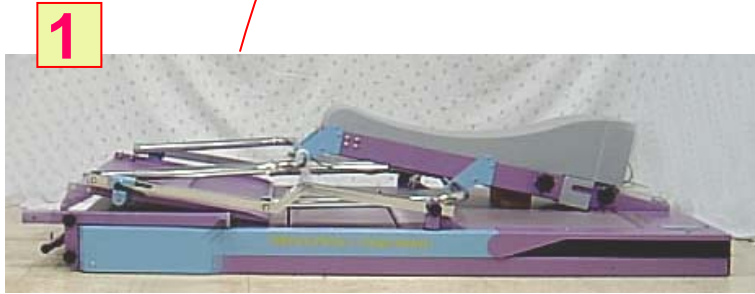


Assembly Instructions – First Page

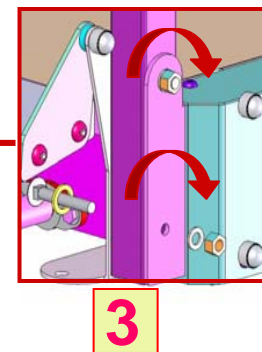
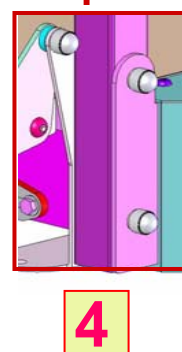
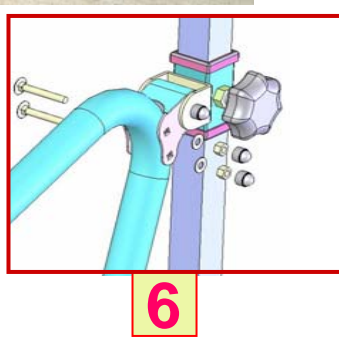
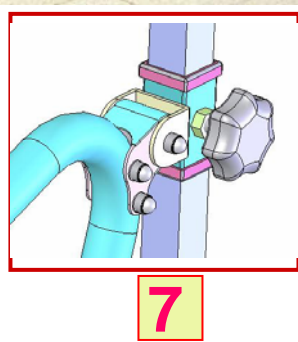
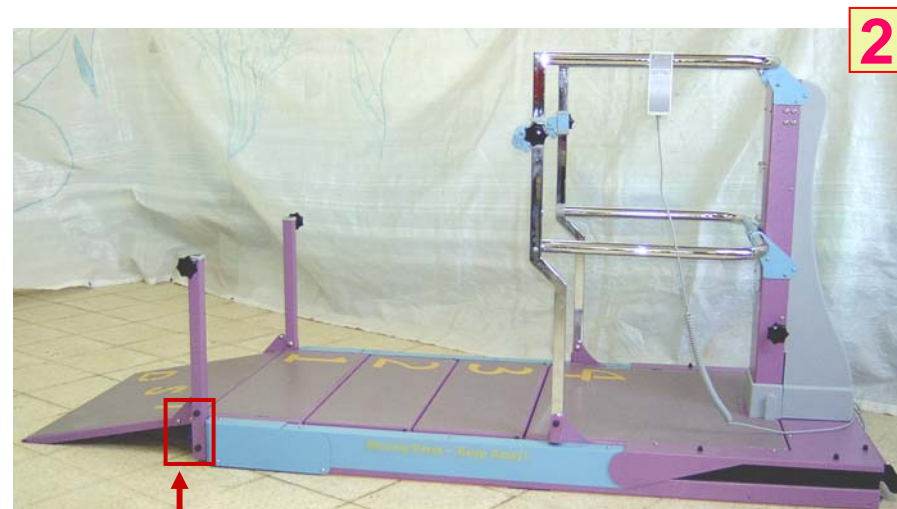
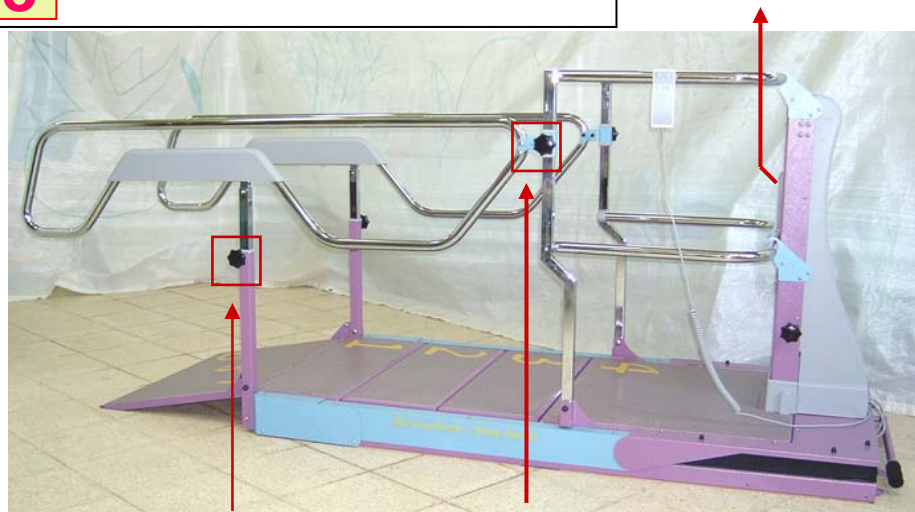
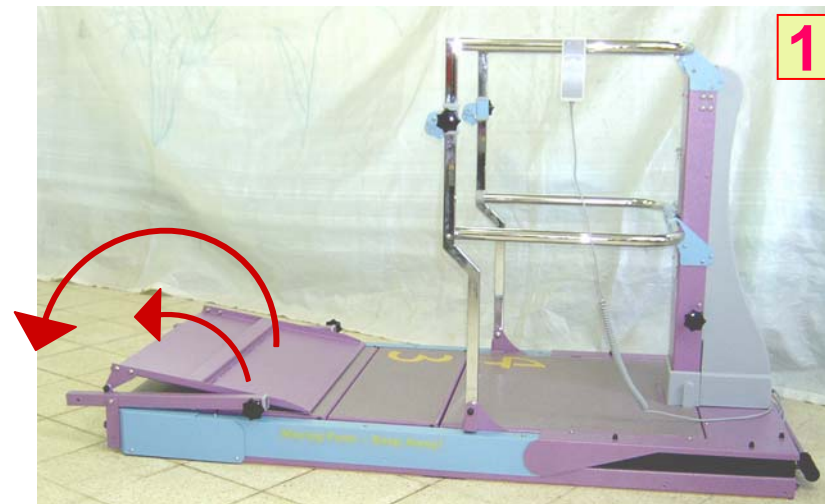
1	2	Lift columns to upright position
	3	Tighten knobs
4	5	Insert safety pins
	6	Tighten knobs
7	8	Tighten screws with appropriate Allen key



For assistance please call your local dealer or Dpe's Service Dep' at working hours (Greenwich Time),
 Tel: +972 2 5791177, Fax: +972 2 5791188
 E-mail: info@dpemed.com

Assembly Instructions –Second Page

1	2	Unfold ramp & columns
	3	Insert knobs
	4	Tighten knobs
	5	Insert banister's columns
	6	Assemble screws & nuts
	7	Tighten screws & nuts
	8	Read the User's Guide



Assembly Instructions –Third Page

